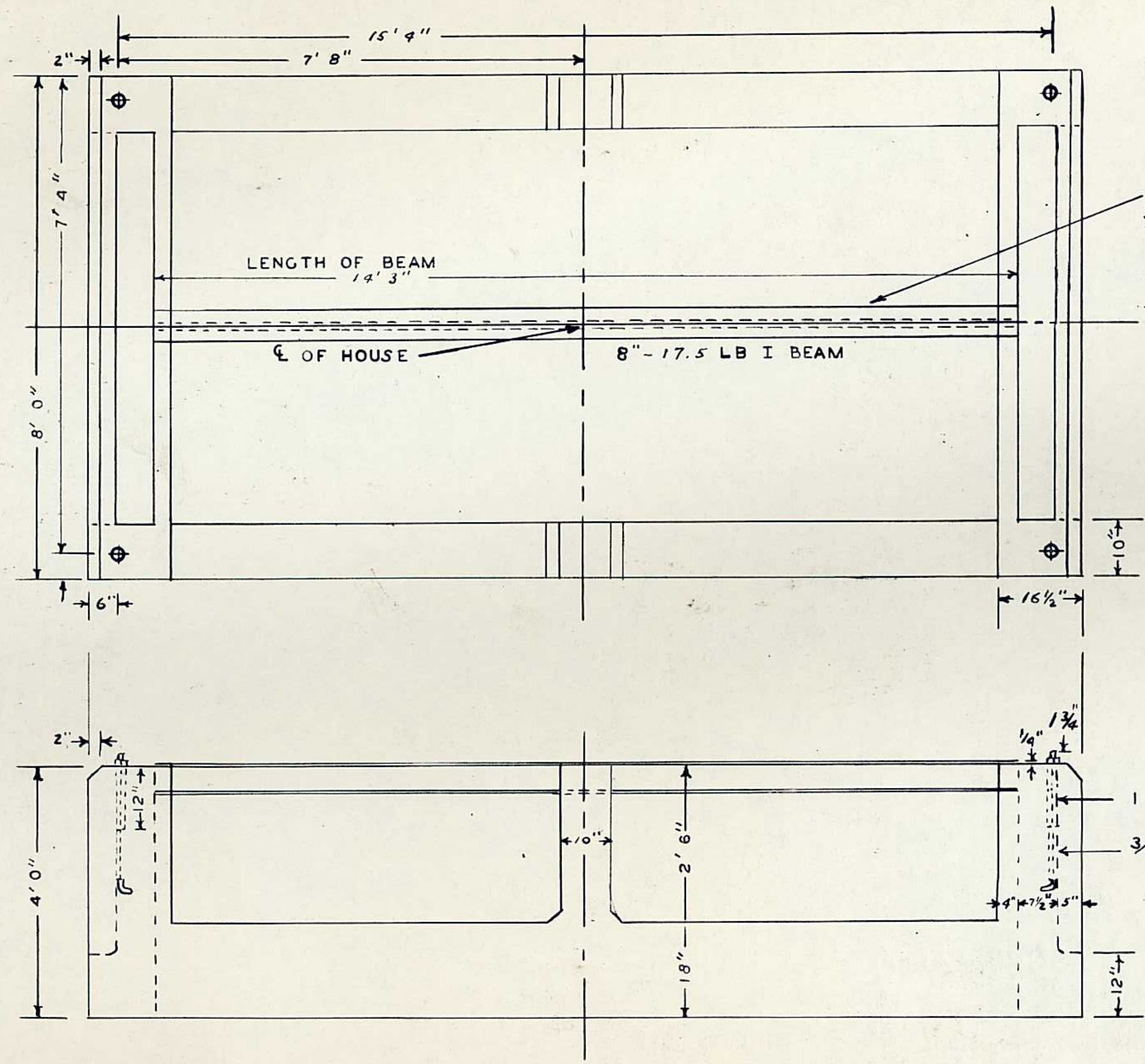


L.V.R.R.

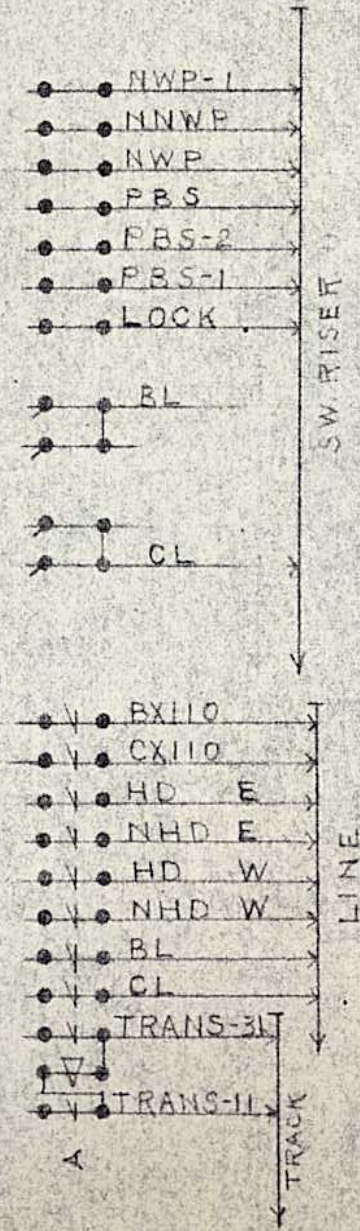
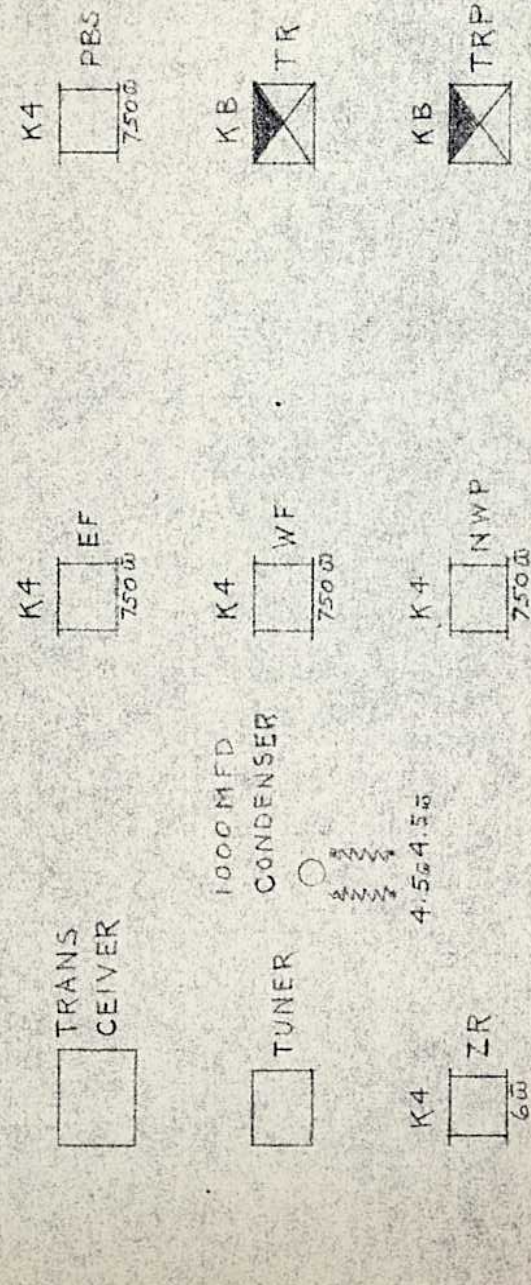
CH. ENG. SIG.COM.



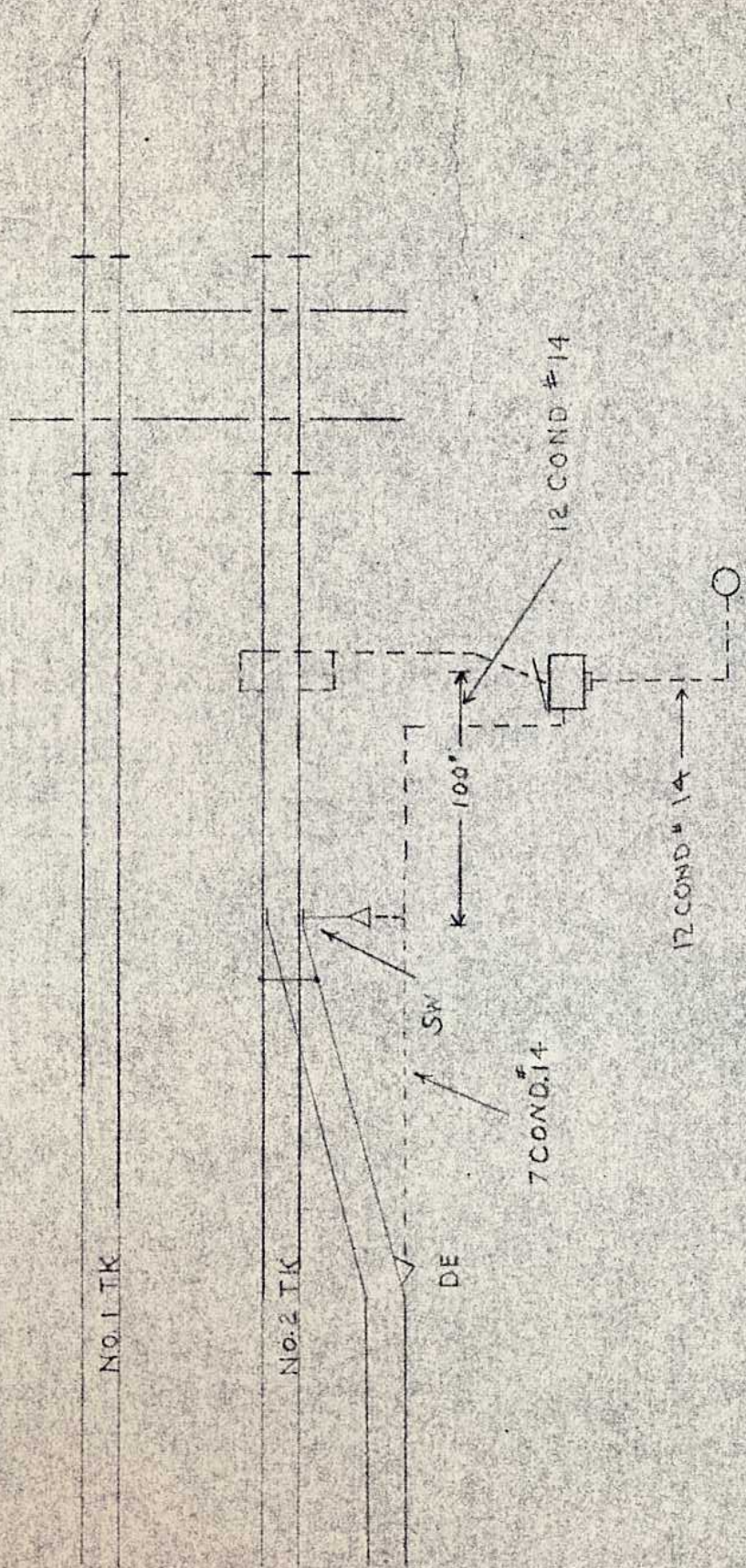
NOTE - CARE SHOULD BE TAKEN TO SEE THAT TOP OF I BEAM OR SECTION OF R.R. RAIL IS  $\frac{1}{4}$  ABOVE TOPS OF PIERS.

I PIPE SLEEVE  
 3/4" X 24" CAD. PL.  
 HOOK BOLTS

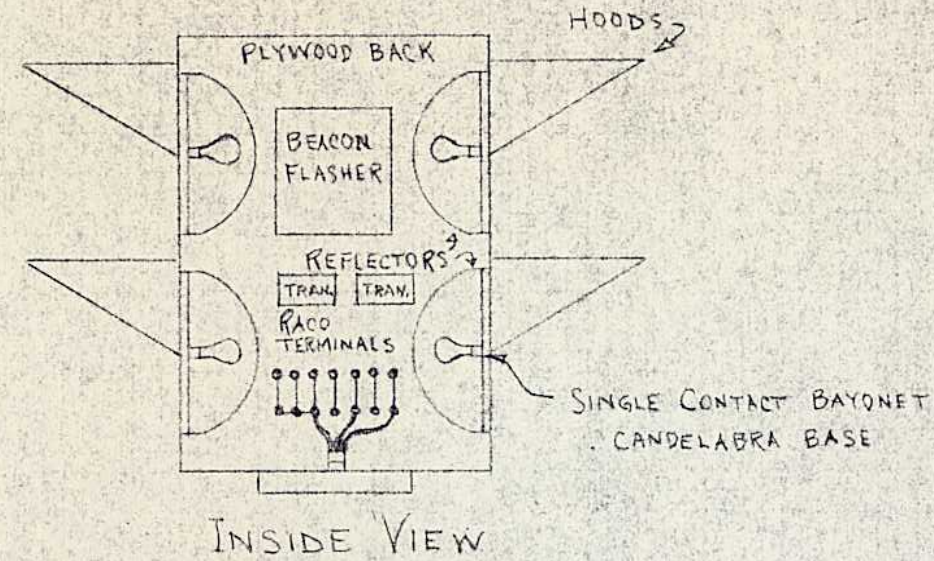
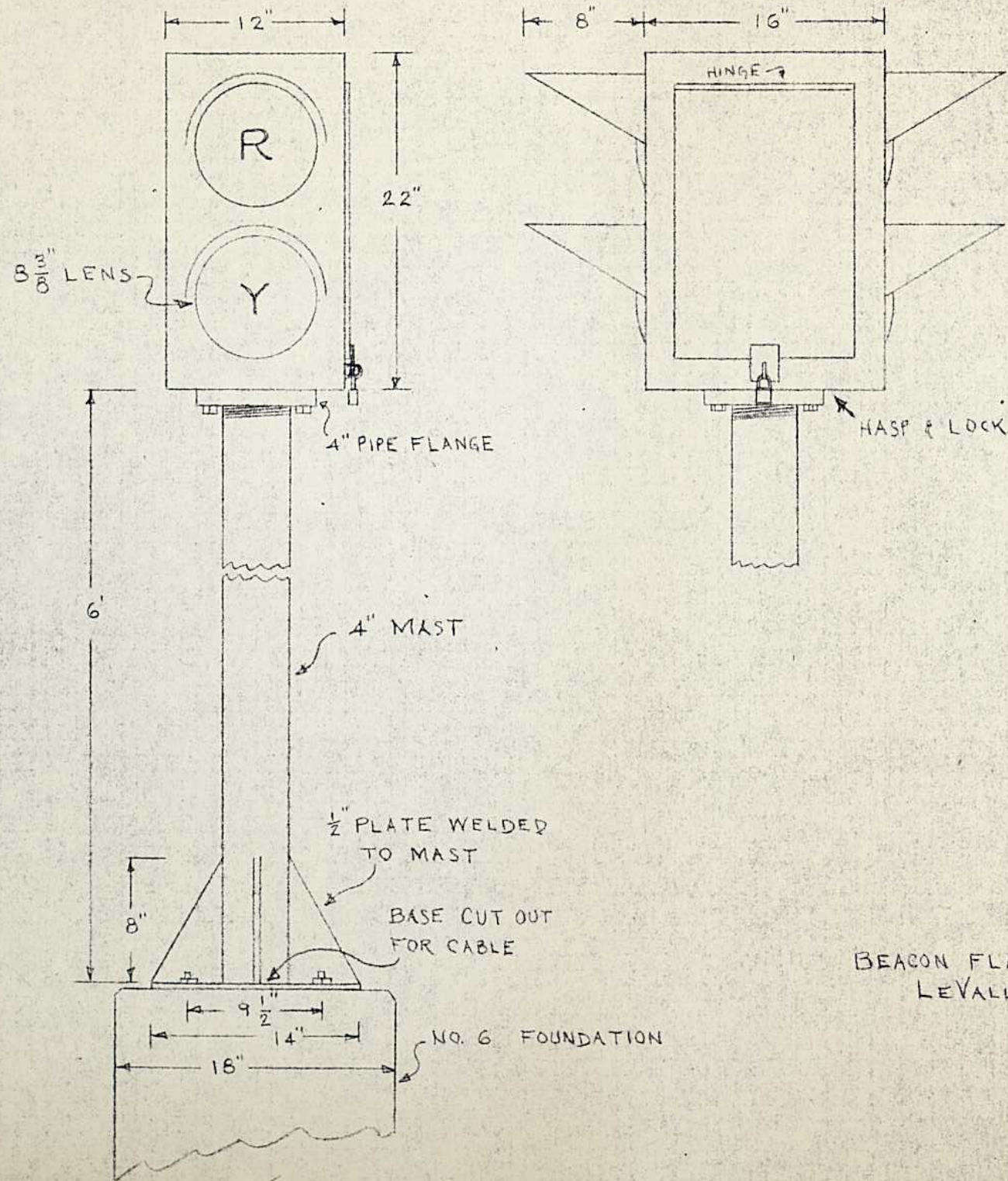
W. H.	ST
6-10-49	196



SHELDON AVE



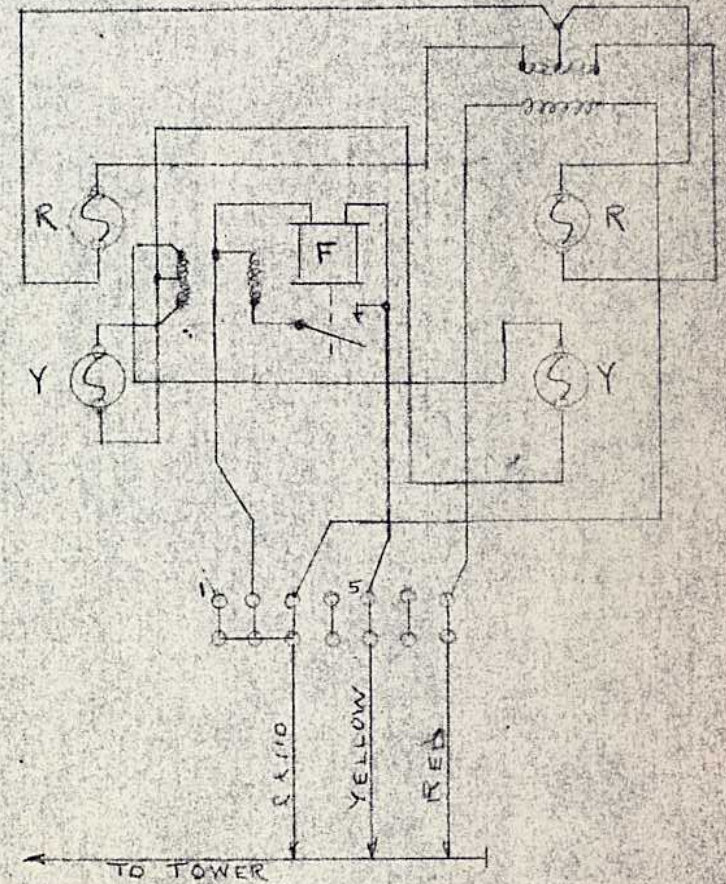
REV. 5-19-66  
DESIGNED  
DRAWN WP  
CHECKED WJW  
SIG. CONST. ENGR.  
APPROVED  
ENGR. SIG. S. O. M.



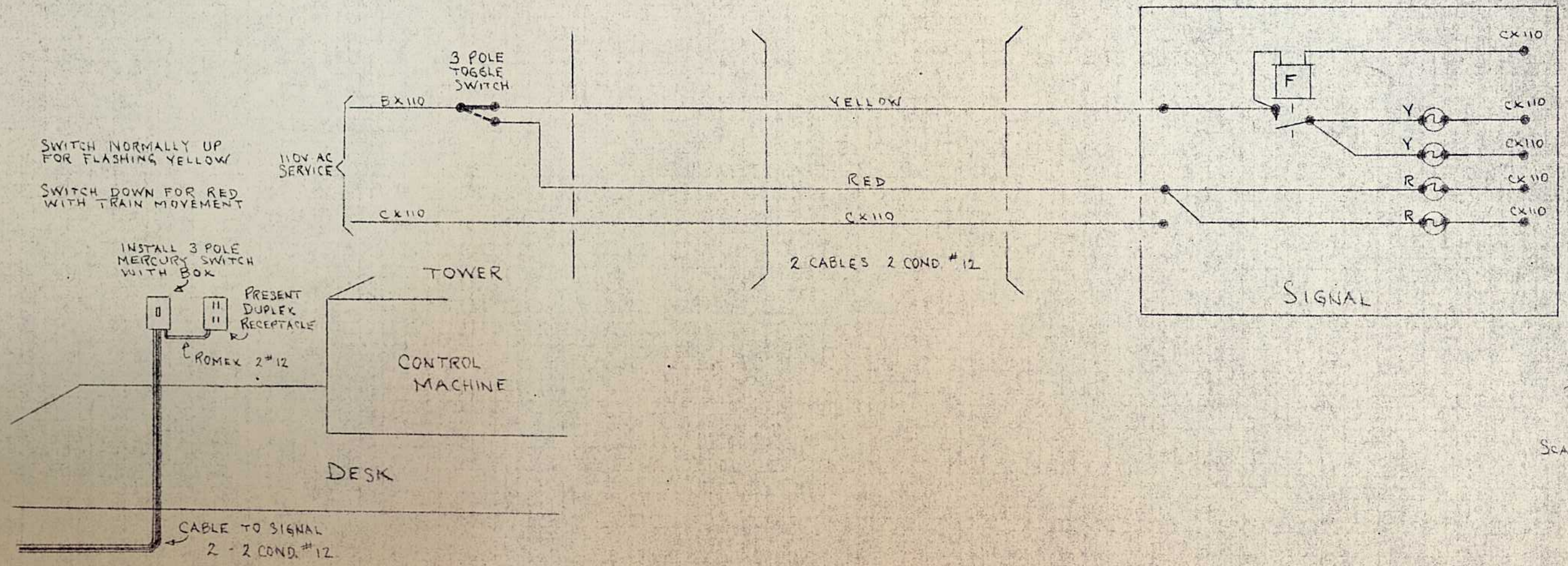
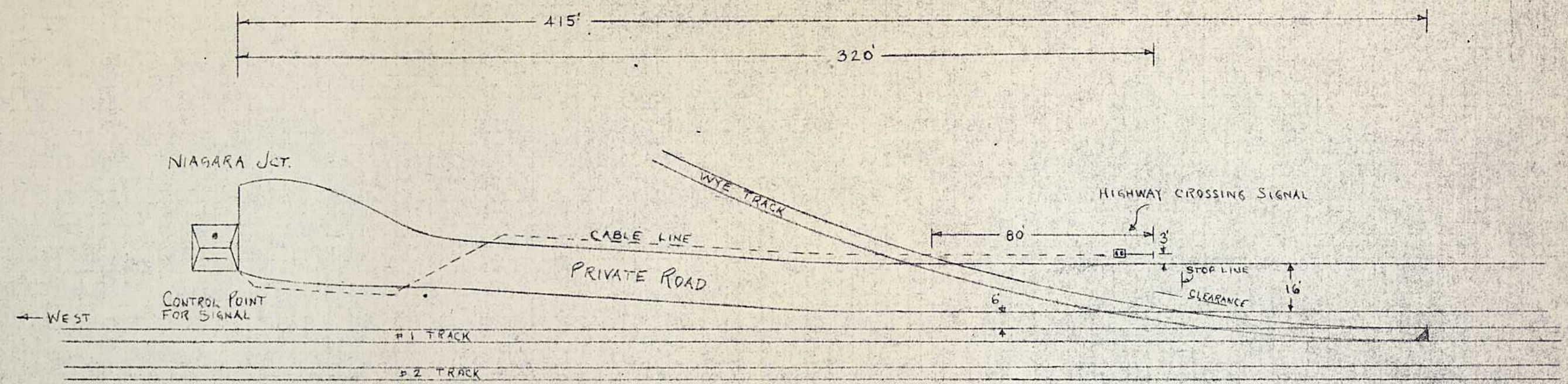
BULBS  
18W 12V-34866-29

TRANS  
MERIT P-2959  
PRI. 115V 60CY  
SEC. 12.6V 2AMP

BEACON FLASHER NO. 9462387G1  
LEVALLEY McLEOD



WIRING FOR SIGNAL



SCALE 1" = 40'